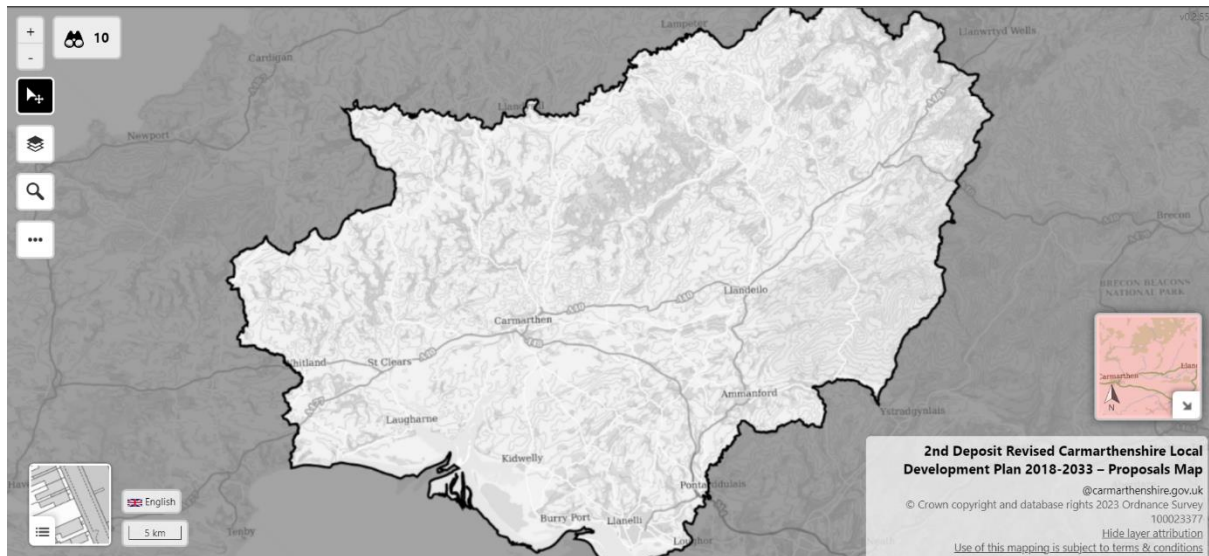


2nd Deposit LDP 2018-2033 Interactive map guide

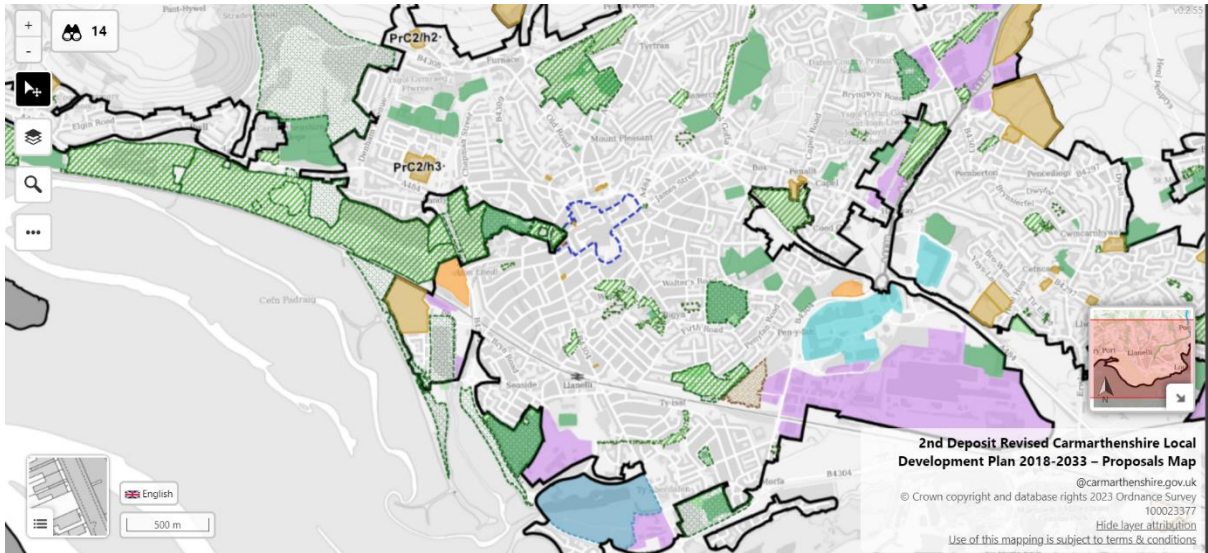
To view the 2nd Deposit LDP map, please click [here](#). You will then be redirected to the following page:



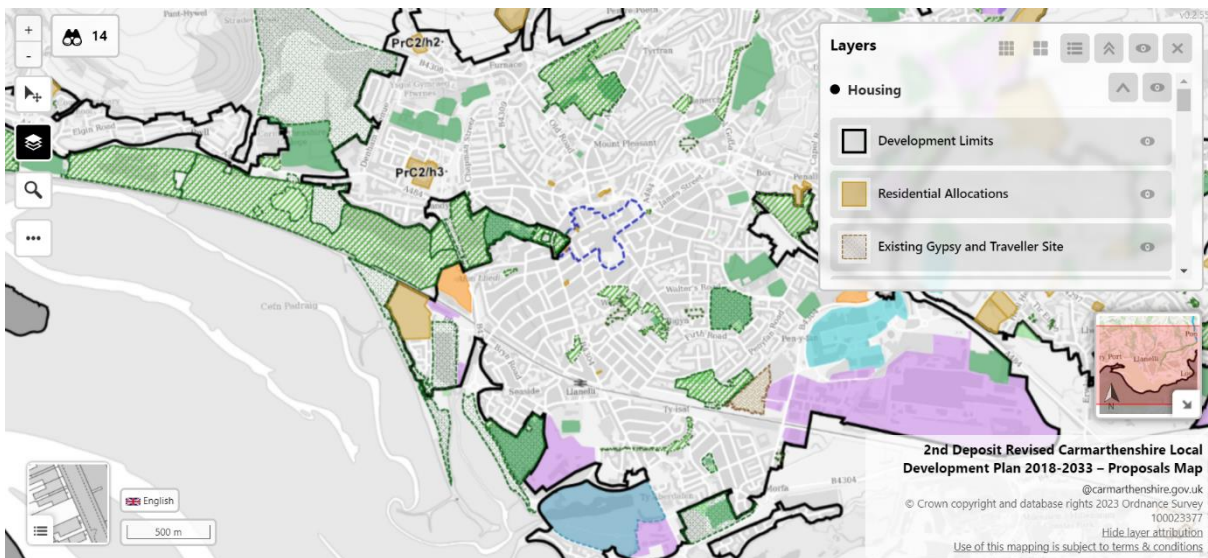
Once you know which part of the map you would like to view, then please do one of the following:

- Click on the '+' icon on the top left of the webpage to zoom in.
- Use your mouse wheel to zoom in on the location of your mouse cursor.
- Click on the magnifying glass on the left of the webpage to open an address search window, through which you can search for a precise area by typing in an address and postcode.

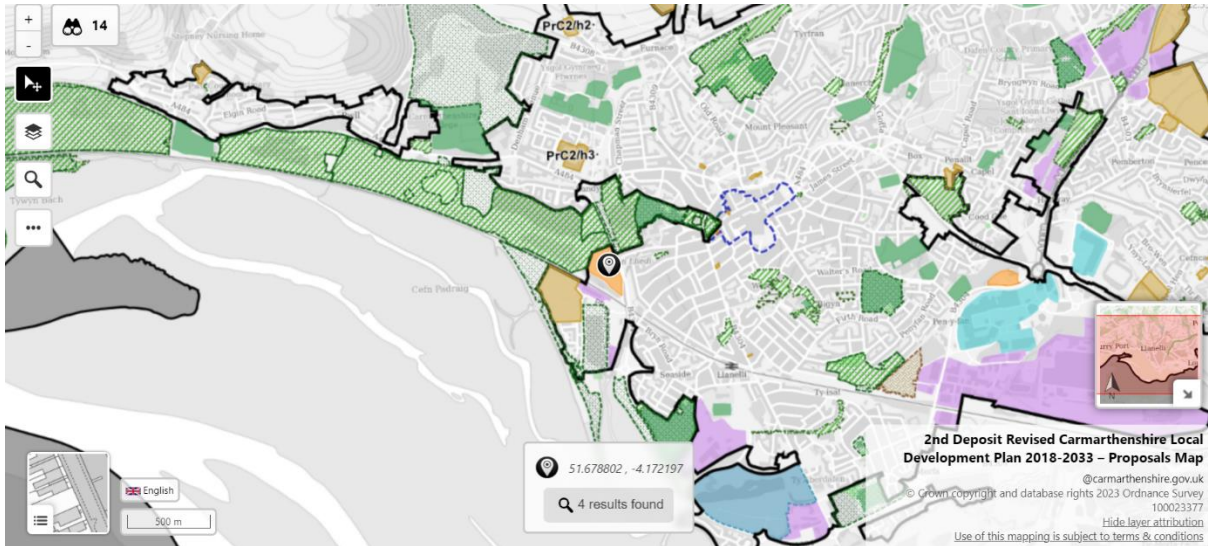
Once you have zoomed in close enough, you will begin to see coloured polygons which represent allocated land within the 2nd Deposit LDP.



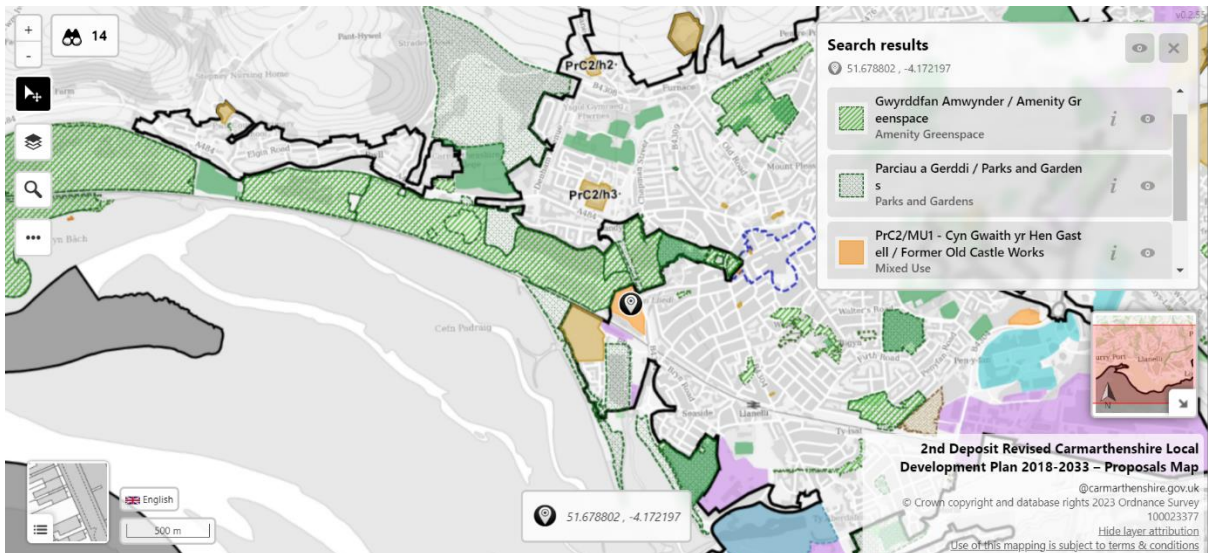
You may view what each of the colours correspond to by clicking on the layer tool on the left of the webpage. Once you click on this the layers window will open on the top left of your window. Scroll down the list in this window to view how each category of allocation is presented. Click on the eye symbol to toggle which layers you would like to be viewable.



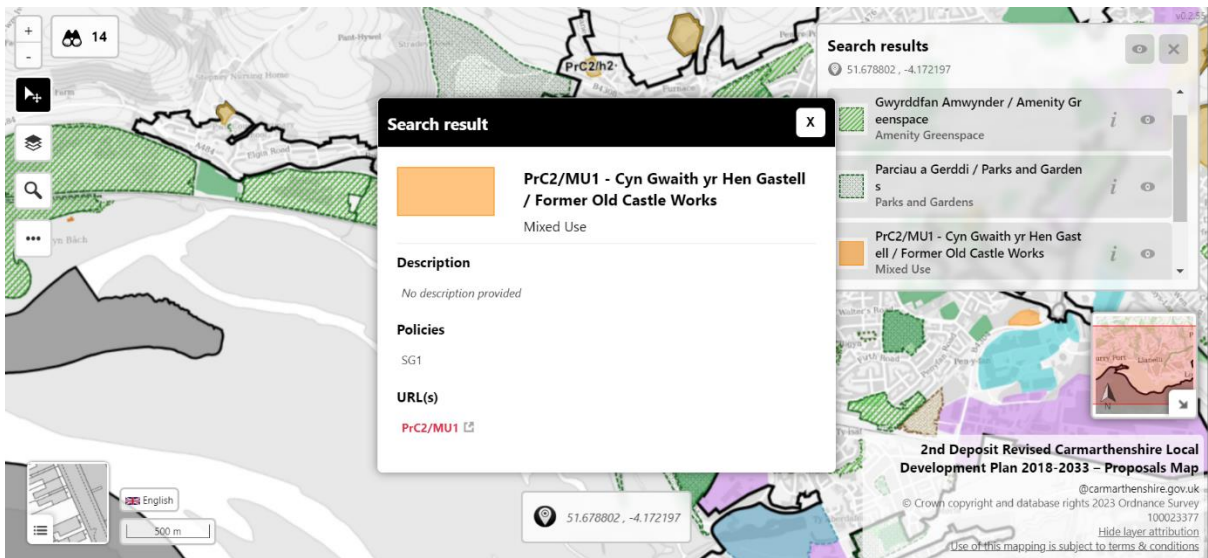
To view a particular allocation, left click on the relevant polygon. Once you have done this, a small window will appear at the bottom middle of the webpage.



This window will display the coordinates of the point which you clicked. If this point is within the boundaries of any polygons, then one or more results will be found, as indicated below the coordinates. Click on this message to open the search results window on the top right of the webpage.



Within the search results window, locate the allocation you would like to view. You can do this by clicking on the *i* icon. This will open a further search result window in the centre of your webpage.

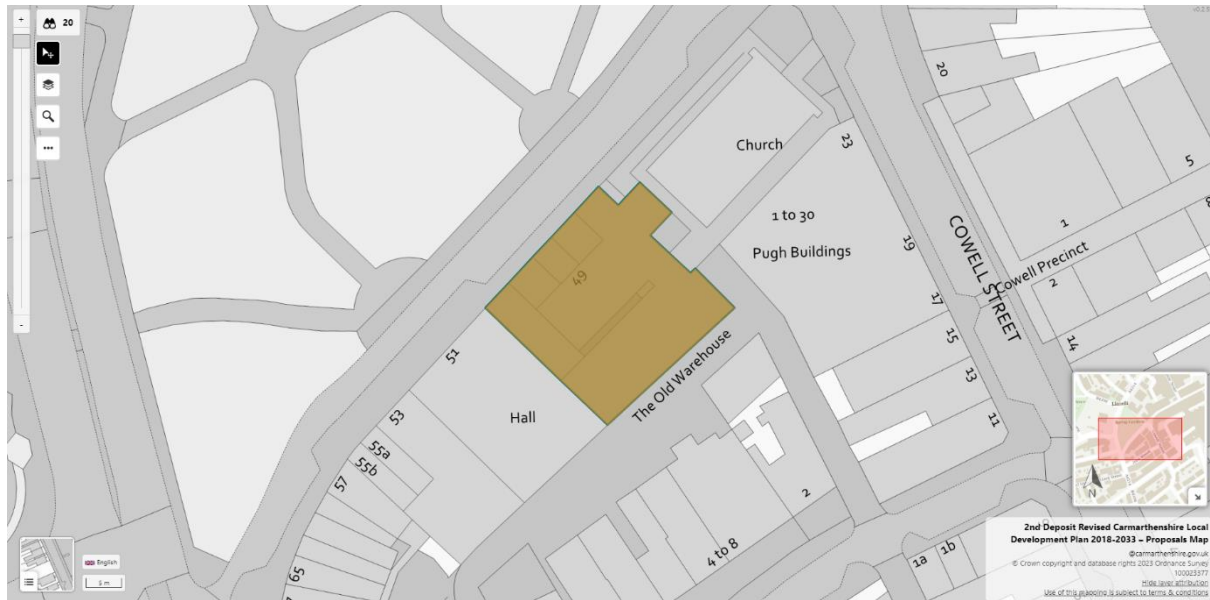


In this window you will see information regarding the allocation, including its title and (where applicable) its reference code, the policy (or policies) it relates to, as well as a URL linking to where this allocation relates to the consultation document (where applicable). If you click on the URL, you will be redirected to a specific part of the document in a new browser window.

opusconsult		My account
PrC2/MU1	Former Old Castle Works, Llanelli Mix of uses focused on the visitor economy, heritage and leisure. No residential allowance made.	
PrC2/MU2	Trostre Gateway, Llanelli Mix of uses reflecting its prominent location and planning history.	
PrC2/MU3	Former YMCA Building, Stepney Street, Llanelli Town Centre A mix of uses at a town centre location, with an allowance for 8 residential units	
PrC3/MU1	Emlyn Brickworks, Penygroes	back to top

Your chosen allocation should be at the top of the page. If you would like to comment on an allocation, click on the corresponding comment box icon on the left side of your webpage. A new text box will appear, within which you can type your comments before clicking finish to

submit. If you click the map icon next to the comment box icon, you will return to the map in a new window.



Once in this view, all layers other than the one which the selection corresponds to will be hidden. To make all layers visible again, open the layer window again to and click the eye icon on the top right of the window.