





KEY

-  Carmarthenshire County Council
-  Brecon Beacons National Park Authority
- Surface Water and Small Watercourses**
-  Zone 2
-  Zone 3

Notes
 The map shows the flood risk data and information based on the map title and legend. If no data is displayed on the map, or not all features are present, this indicates that the respective flood source or features are not present within this area.

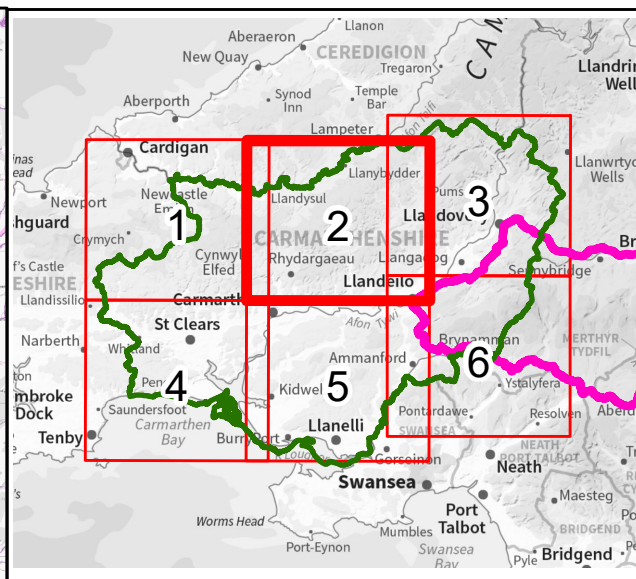
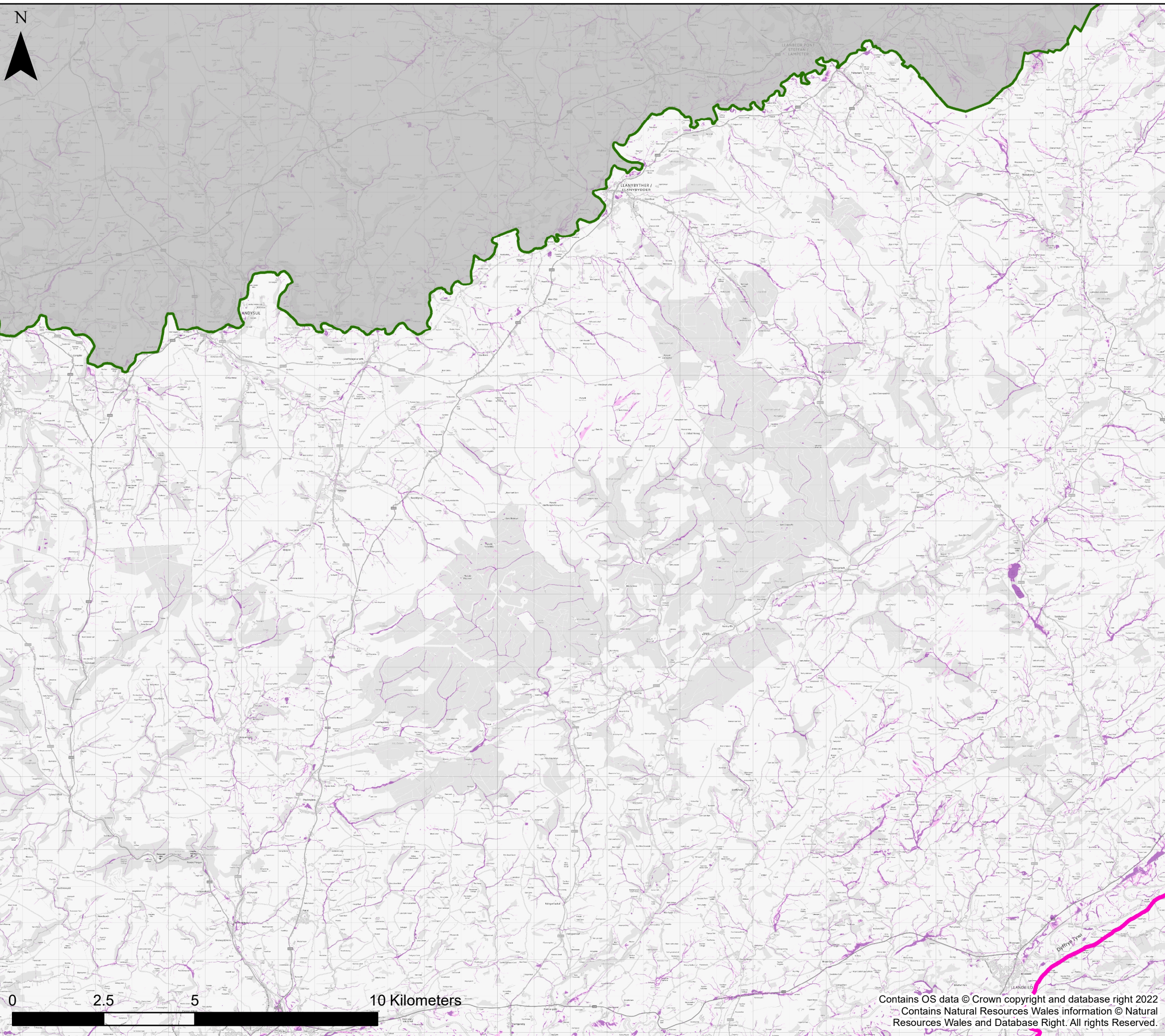


Carmarthenshire County Council
Stage 1 Strategic Flood Consequences Assessment
Flood Map for Planning- Surface Water and Small Watercourses





This document is the property of Jeremy Benn Associates Ltd. It shall not be reproduced in whole or in part, nor disclosed to a third party, without the permission of Jeremy Benn Associates Ltd.

Page number 1 of 6	Drawn	HB	13/06/2022
	Checked	PR	14/06/2022
	Approved	GB	15/06/2022

Contains OS data © Crown copyright and database right 2022
 Contains Natural Resources Wales information © Natural Resources Wales and Database Right. All rights Reserved.



KEY

-  Carmarthenshire County Council
-  Brecon Beacons National Park Authority
- Surface Water and Small Watercourses**
-  Zone 2
-  Zone 3

Notes
 The map shows the flood risk data and information based on the map title and legend. If no data is displayed on the map, or not all features are present, this indicates that the respective flood source or features are not present within this area.



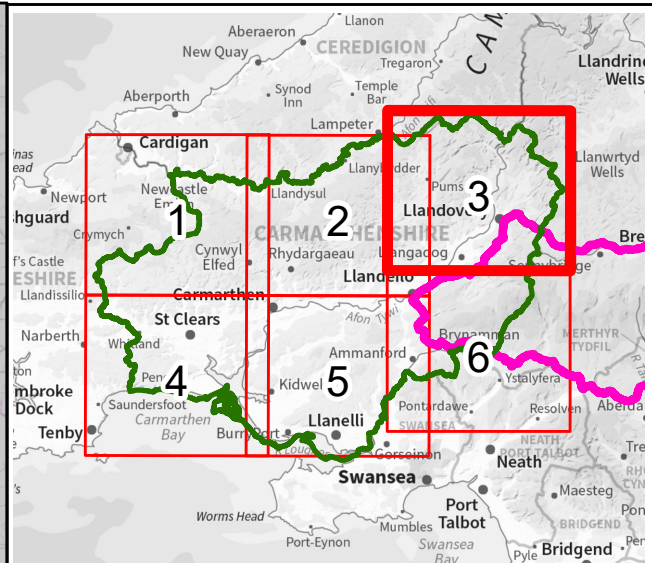
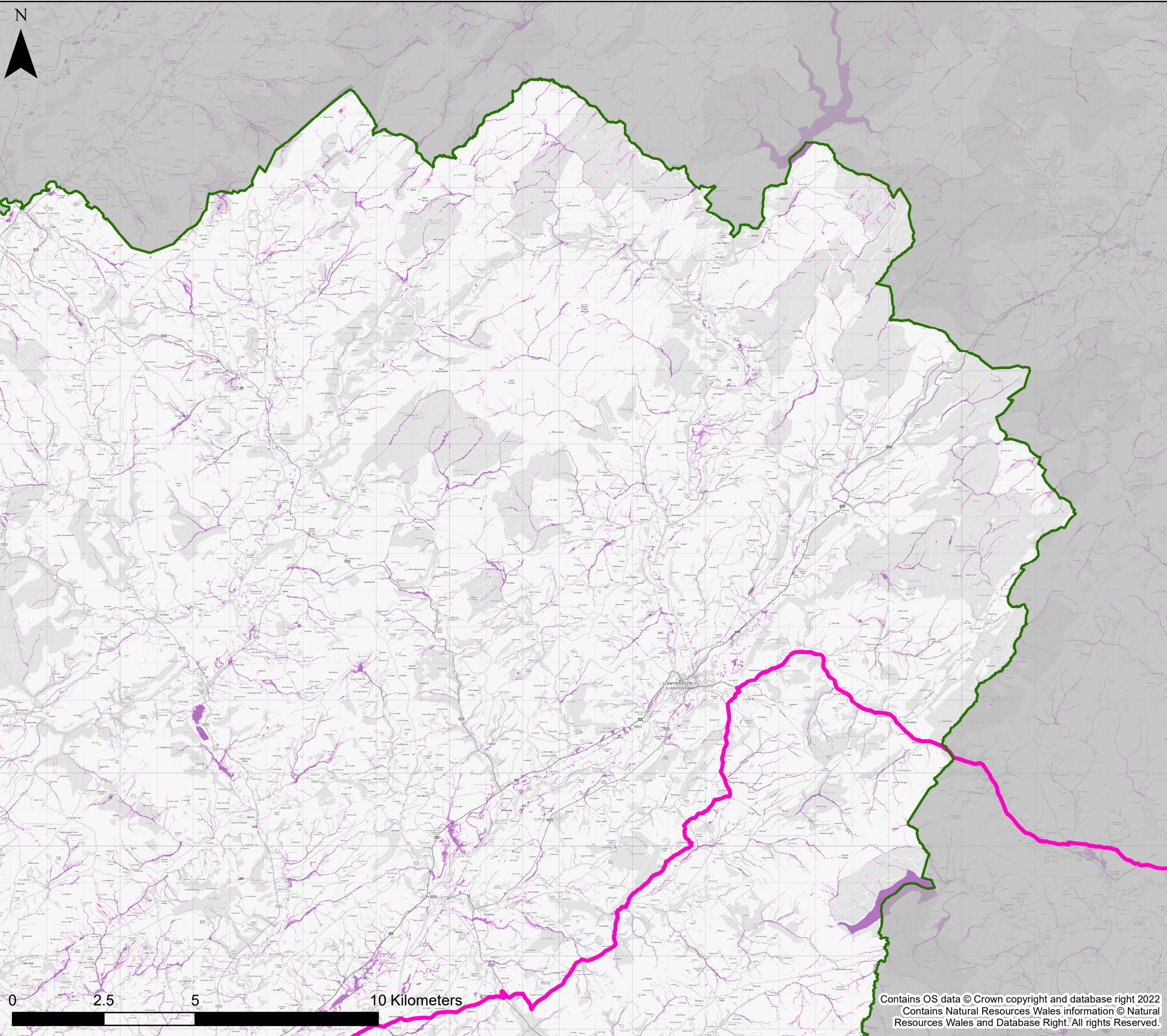
Carmarthenshire County Council
Stage 1 Strategic Flood Consequences Assessment
Flood Map for Planning- Surface Water and Small Watercourses

This document is the property of Jeremy Benn Associates Ltd. It shall not be reproduced in whole or in part, nor disclosed to a third party, without the permission of Jeremy Benn Associates Ltd.





Page number	Drawn	HB	13/06/2022
2 of 6	Checked	PR	14/06/2022
	Approved	GB	15/06/2022



Contains OS data © Crown copyright and database right 2022
 Contains Natural Resources Wales information © Natural Resources Wales and Database Right. All rights Reserved.



KEY

-  Carmarthenshire County Council
-  Brecon Beacons National Park Authority
- Surface Water and Small Watercourses**
-  Zone 2
-  Zone 3

Notes
 The map shows the flood risk data and information based on the map title and legend. If no data is displayed on the map, or not all features are present, this indicates that the respective flood source or features are not present within this area.

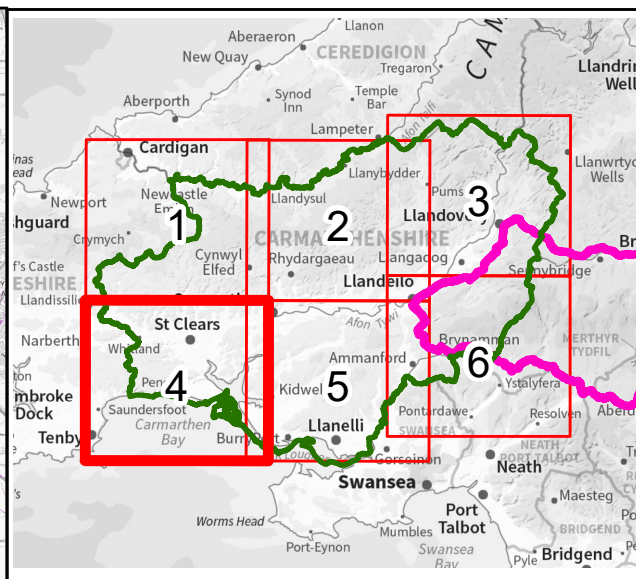
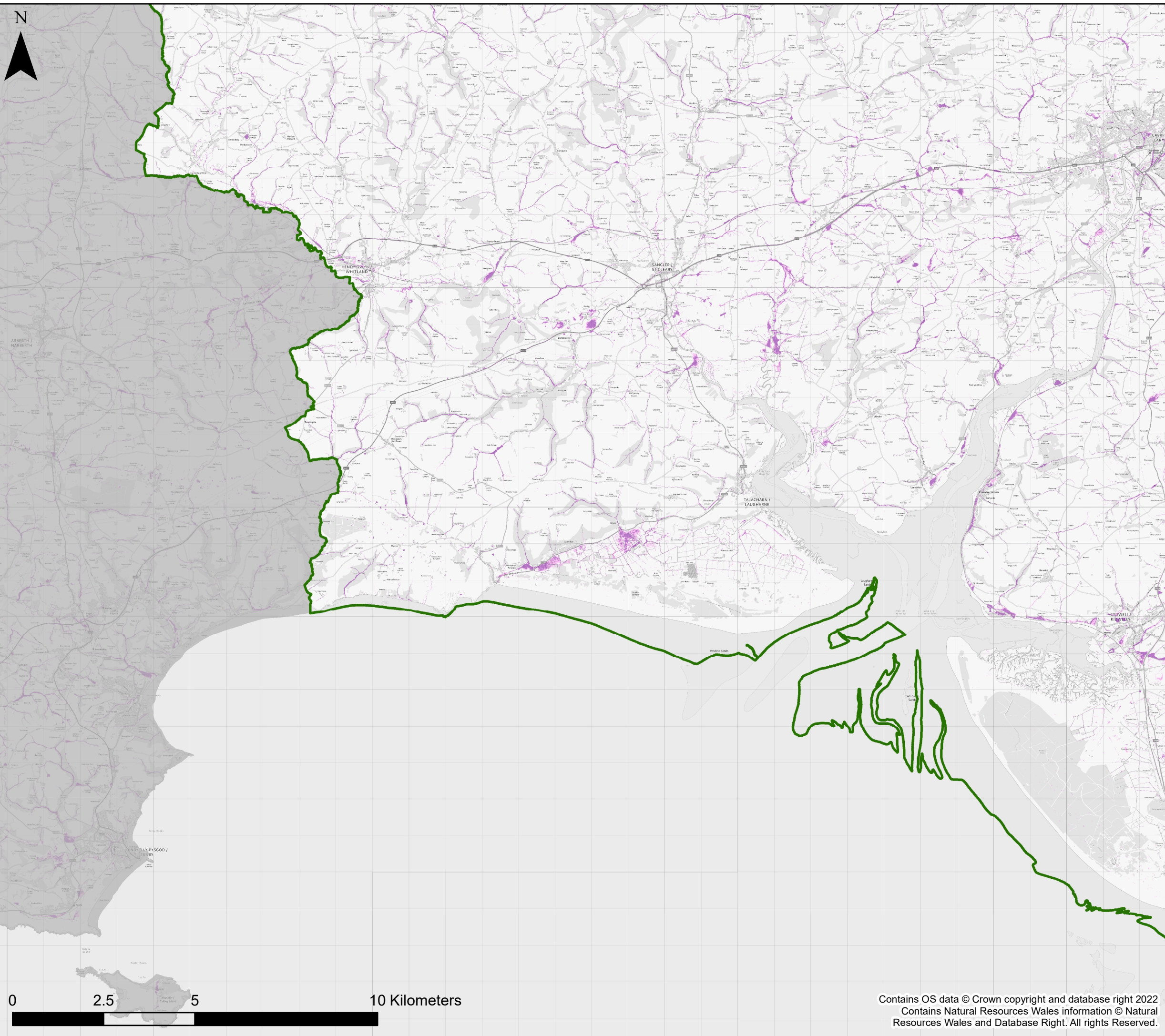


Carmarthenshire County Council
Stage 1 Strategic Flood Consequences Assessment
Flood Map for Planning- Surface Water and Small Watercourses





This document is the property of Jeremy Benn Associates Ltd. It shall not be reproduced in whole or in part, nor disclosed to a third party, without the permission of Jeremy Benn Associates Ltd.

Page number	Drawn	HB	13/06/2022
3 of 6	Checked	PR	14/06/2022
	Approved	GB	15/06/2022

Contains OS data © Crown copyright and database right 2022
 Contains Natural Resources Wales information © Natural Resources Wales and Database Right. All rights Reserved.



KEY

-  Carmarthenshire County Council
-  Brecon Beacons National Park Authority
- Surface Water and Small Watercourses**
-  Zone 2
-  Zone 3

Notes
 The map shows the flood risk data and information based on the map title and legend. If no data is displayed on the map, or not all features are present, this indicates that the respective flood source or features are not present within this area.



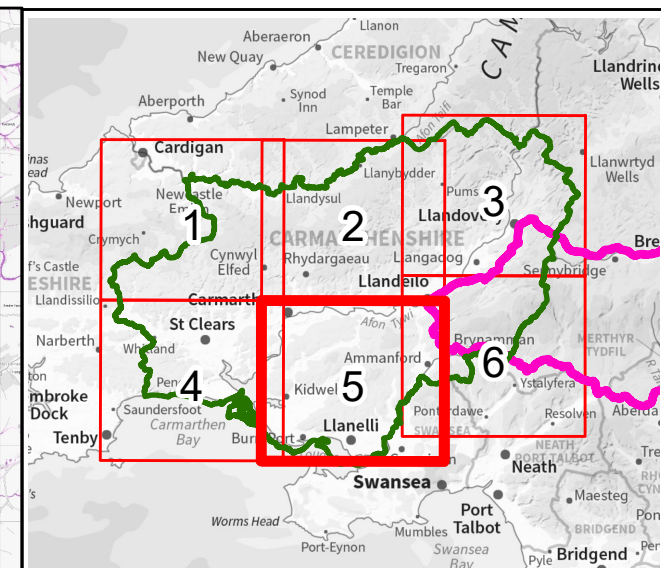
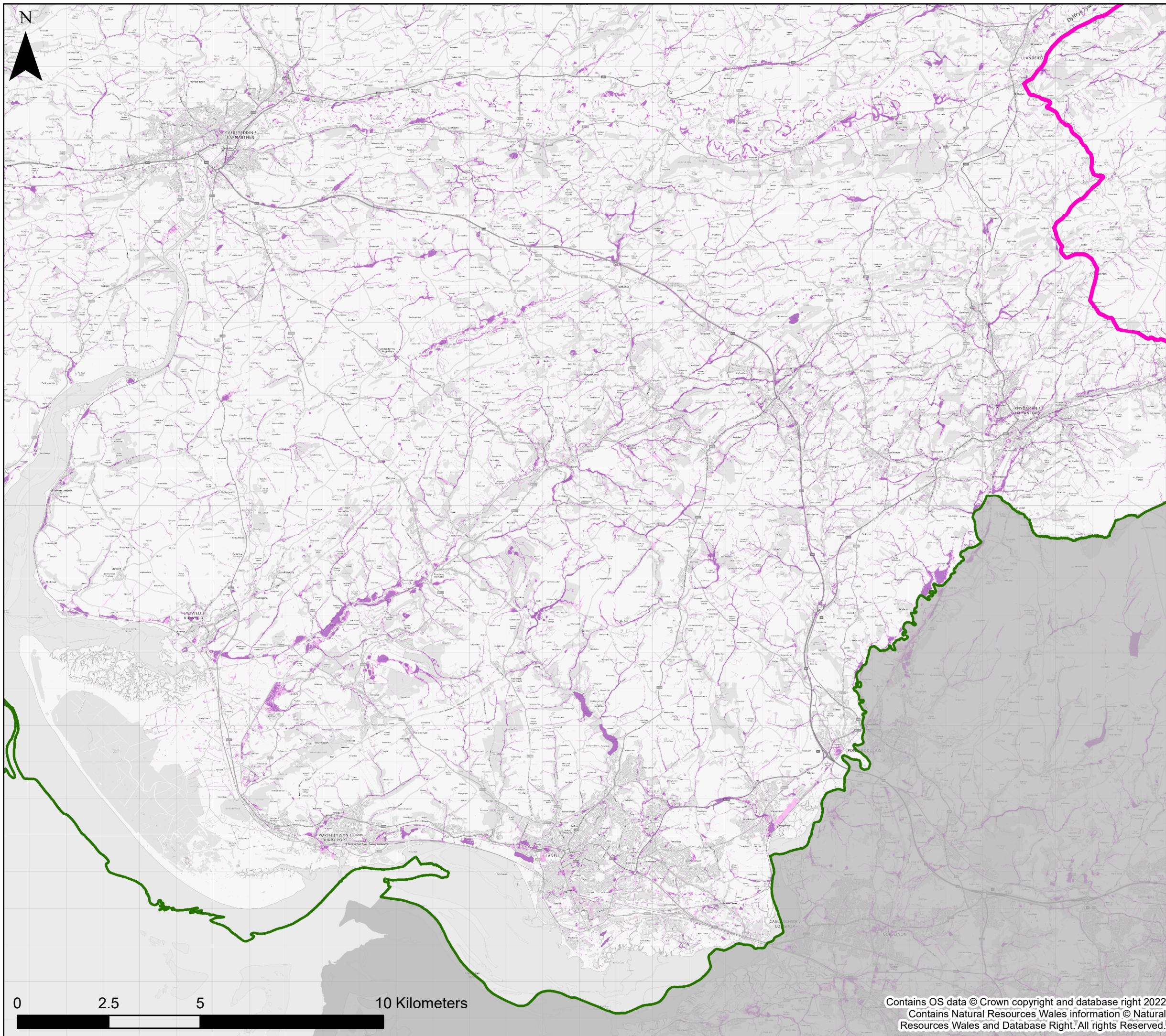
Carmarthenshire County Council
Stage 1 Strategic Flood Consequences Assessment
Flood Map for Planning- Surface Water and Small Watercourses

This document is the property of Jeremy Benn Associates Ltd. It shall not be reproduced in whole or in part, nor disclosed to a third party, without the permission of Jeremy Benn Associates Ltd.





Page number	Drawn	HB	13/06/2022
4 of 6	Checked	PR	14/06/2022
	Approved	GB	15/06/2022



Contains OS data © Crown copyright and database right 2022
 Contains Natural Resources Wales information © Natural Resources Wales and Database Right. All rights Reserved.



KEY

-  Carmarthenshire County Council
-  Brecon Beacons National Park Authority
- Surface Water and Small Watercourses**
-  Zone 2
-  Zone 3

Notes
 The map shows the flood risk data and information based on the map title and legend. If no data is displayed on the map, or not all features are present, this indicates that the respective flood source or features are not present within this area.



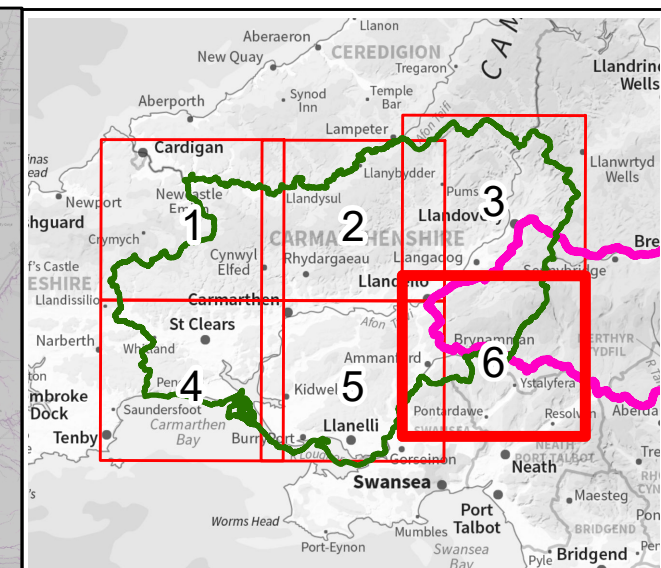
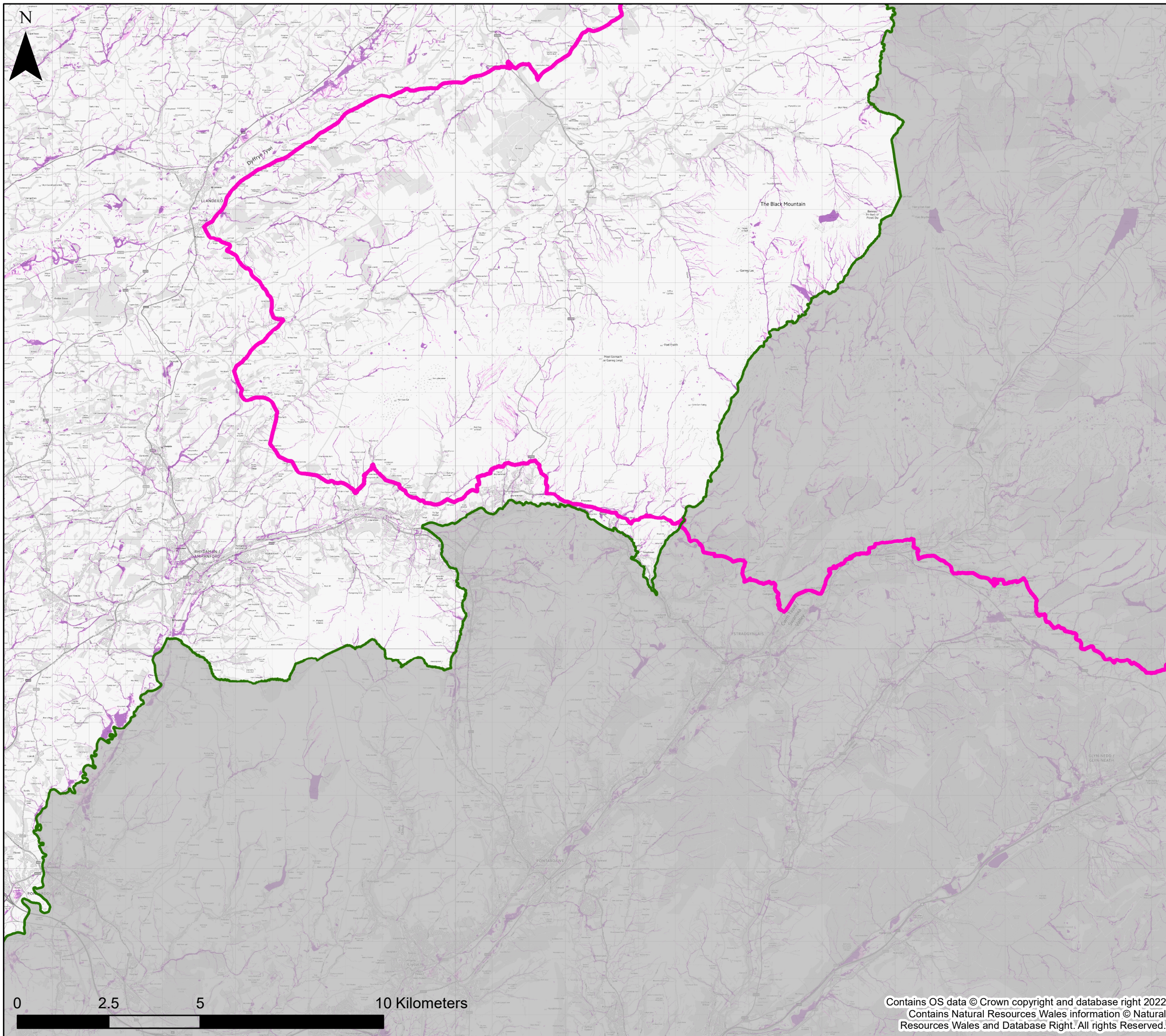
Carmarthenshire County Council
Stage 1 Strategic Flood Consequences Assessment
Flood Map for Planning- Surface Water and Small Watercourses

This document is the property of Jeremy Benn Associates Ltd. It shall not be reproduced in whole or in part, nor disclosed to a third party, without the permission of Jeremy Benn Associates Ltd.





Page number	Drawn	HB	13/06/2022
5 of 6	Checked	PR	14/06/2022
	Approved	GB	15/06/2022



Contains OS data © Crown copyright and database right 2022
 Contains Natural Resources Wales information © Natural Resources Wales and Database Right. All rights Reserved.



KEY

-  Carmarthenshire County Council
-  Brecon Beacons National Park Authority
- Surface Water and Small Watercourses**
-  Zone 2
-  Zone 3

Notes
 The map shows the flood risk data and information based on the map title and legend. If no data is displayed on the map, or not all features are present, this indicates that the respective flood source or features are not present within this area.



Carmarthenshire County Council
Stage 1 Strategic Flood Consequences Assessment
Flood Map for Planning- Surface Water and Small Watercourses

This document is the property of Jeremy Benn Associates Ltd. It shall not be reproduced in whole or in part, nor disclosed to a third party, without the permission of Jeremy Benn Associates Ltd.

Page number	Drawn	HB	13/06/2022
6 of 6	Checked	PR	14/06/2022
	Approved	GB	15/06/2022



Contains OS data © Crown copyright and database right 2022
 Contains Natural Resources Wales information © Natural Resources Wales and Database Right. All rights Reserved.