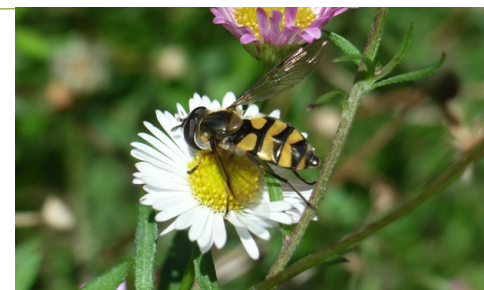




Understanding and respect for nature can be fostered in children from a very early age. Biodiversity is an essential component of environmental education and can be linked to the national curriculum in many different ways.

Positive action could include:

- Manage and create space for wildlife in your school grounds – a greater diversity of plants and habitats will attract a greater diversity of wildlife
- Incorporate biodiversity into your school's curricula, through science, maths geography as well as citizenship, art, English and Welsh. Completing a biodiversity survey for the school, could develop mapping and data analysis skills.
- Organise school visits to local nature reserves – there are many reserves across Carmarthenshire.
- Share your success stories with the community to inspire others to do what you've done
- Use an INSET day for training in biodiversity education – managing grounds for biodiversity has been given as an INSET day for primary schools in the past
- Use the classroom to demonstrate good practice for the environment: recycle waste and use water and energy wisely



DISCOVER

If you want to find out what wildlife lives in your patch, the Aderyn website will help you. You can put in your postcode and it will tell you what's been recorded near you, or you can search for specific species to see how rare or common something is in Wales. <https://aderyn.lercwales.org.uk>

Get to know your local patch to see what opportunities you have to enhance the wildlife there. What patch of grassland could be allowed to grow, where could you plant some trees, where could you make a pond or just create a wood pile?



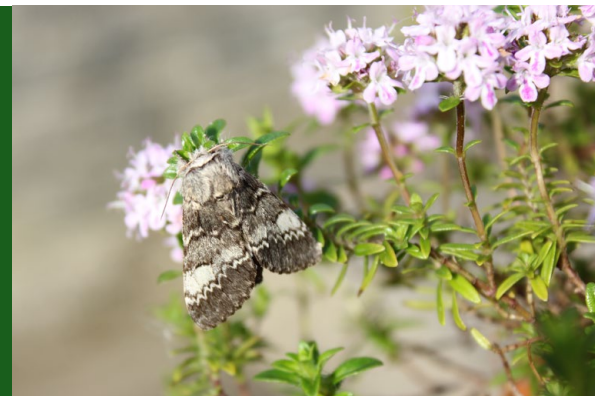
MANAGE

Use the expertise of the Local Nature Partnerships and the organisations within it: they can help advise on what action you could undertake on your site. [Carmarthenshire Nature Partnership \(gov.wales\)](http://gov.wales)



CREATE

Try to create a mosaic or patchwork of habitats that are connected. You can work with the natural characteristics of your land and enhance what is already there, or create a wildlife garden or raised beds with pollinator-friendly plants.



PROTECT

Avoid using pesticides and herbicides and go peat free – use peat alternatives and help save our valuable peat bogs. Get involved with a local wildlife project and protect your local wildlife sites.



For more detail:

- Find out more about nature in Carmarthenshire at [Biodiversity \(gov.wales\)](http://gov.wales)
- Contact Biodiversity@carmarthenshire.gov.uk for more information or if you would like to sign up to the Nature News e-mails.
- [Resources for Improving Biodiversity](#) – National Botanic Garden of Wales

